

City of Hillsboro Year-Round Shelter Project

July 2024 Artist Renderings

These preliminary designs were created by Walsh Construction & Holst Architecture. This design-build team is working collaboratively with the City of Hillsboro to keep the project within budget as prices for labor and materials fluctuate.

The shelter's design and timeline are both subject to change as the project evolves.

[Visit Engage Hillsboro](#) to see the latest project timeline and learn more.

Aerial View: SW 17th Avenue & TV Highway



Aerial View: Detailed



Indoor/Outdoor Dining Court



Congregate Shelter Entrance



From TV Highway/OR 8



Check In Desk & Computer Access



Community Room



Dining & Community Space



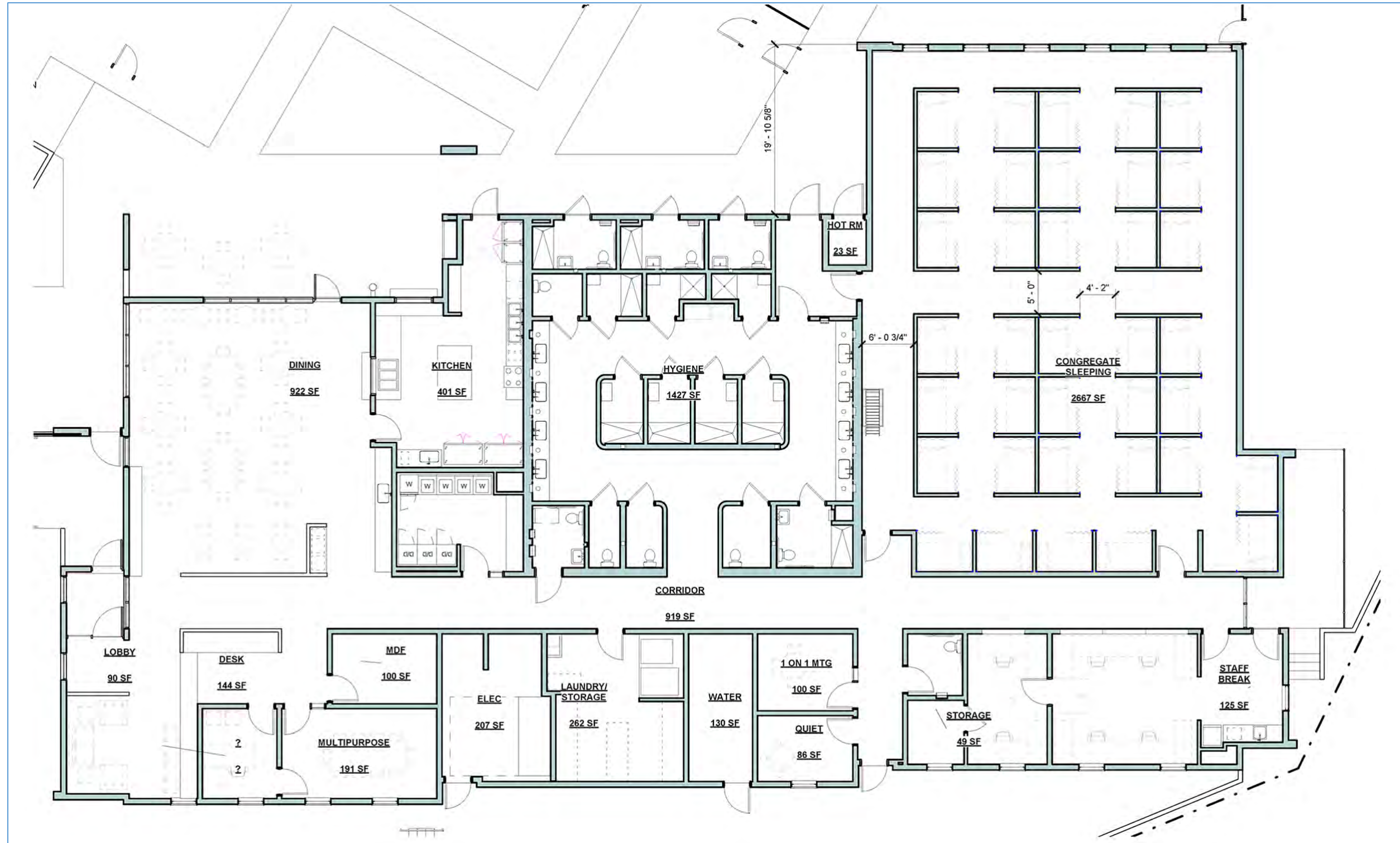
Congregate Shelter Sleeping Space



Congregate Shelter Sleeping Area



Congregate Shelter Layout



Individual Shelter Pod: Exterior



Individual Shelter Pod: Interior

