



Washington County

Addressing Homelessness in Our Community

Homelessness in Hillsboro:
Listen & Learn event

January 28, 2023

Department of Housing Services

co.washington.or.us



Addressing Homelessness



- Homelessness in our Community
- Homeless Response System
- Accomplishments so far





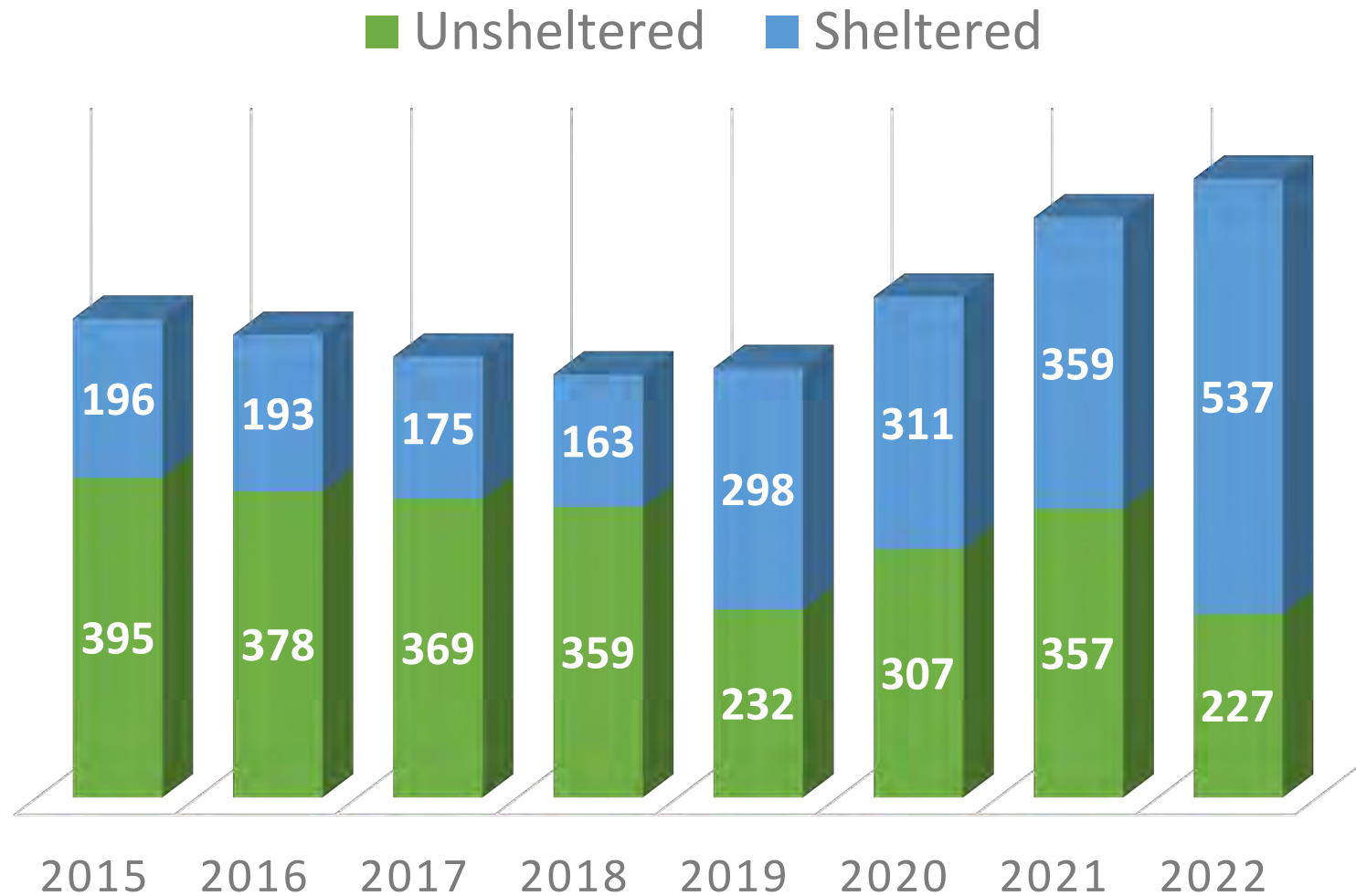
What we know...



- Housing instability and homelessness **can happen to anyone**
- Homelessness is a **regional challenge**
- **Collaboration and partnerships** are essential
- **Housing ends homelessness.** Using a **housing-first approach**, has been shown time and time again to be the best approach to solving homelessness.



Homelessness in our Community





Homeless Response System



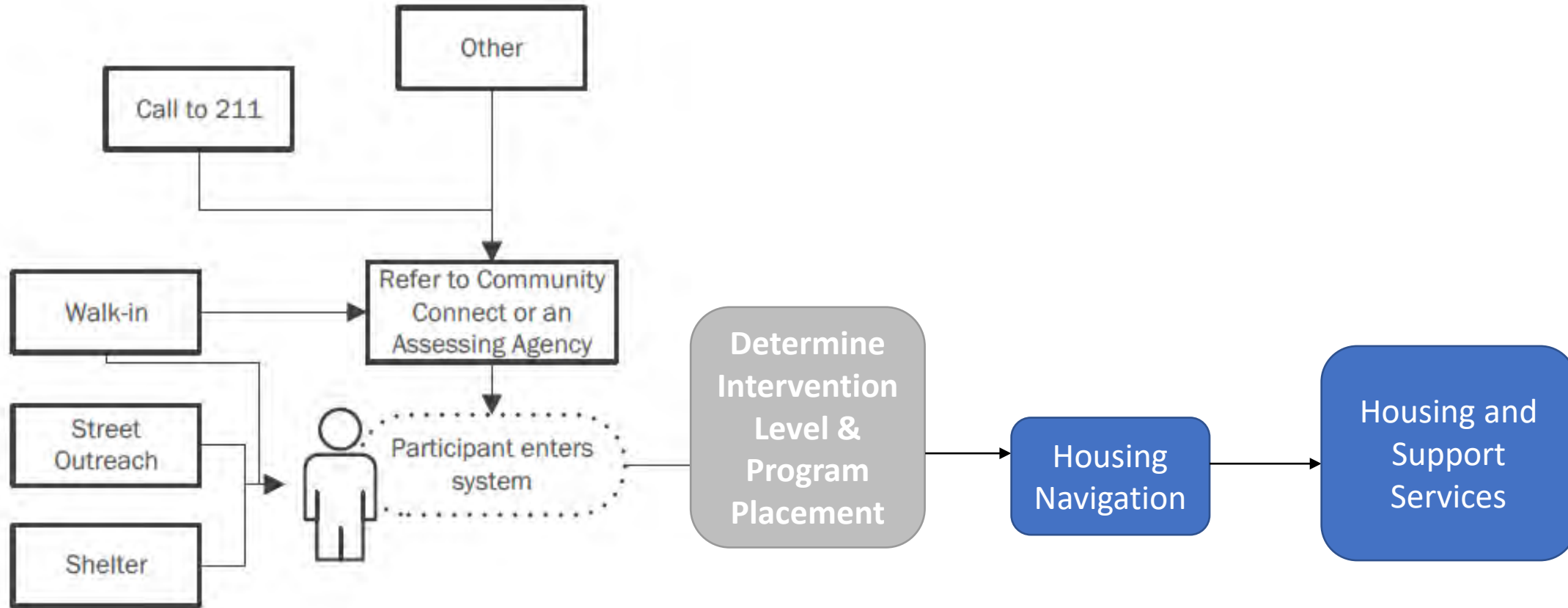
- Street Outreach
- Emergency Shelter
 - Winter Shelter
 - Year-Round Shelter
 - Bridge Shelter/Transitional Housing
 - Inclement Weather
- Rapid Rehousing
- Permanent Housing
- Permanent Supportive Housing



Dora moved into her apartment in November 2021 with the help of Greater Good Northwest

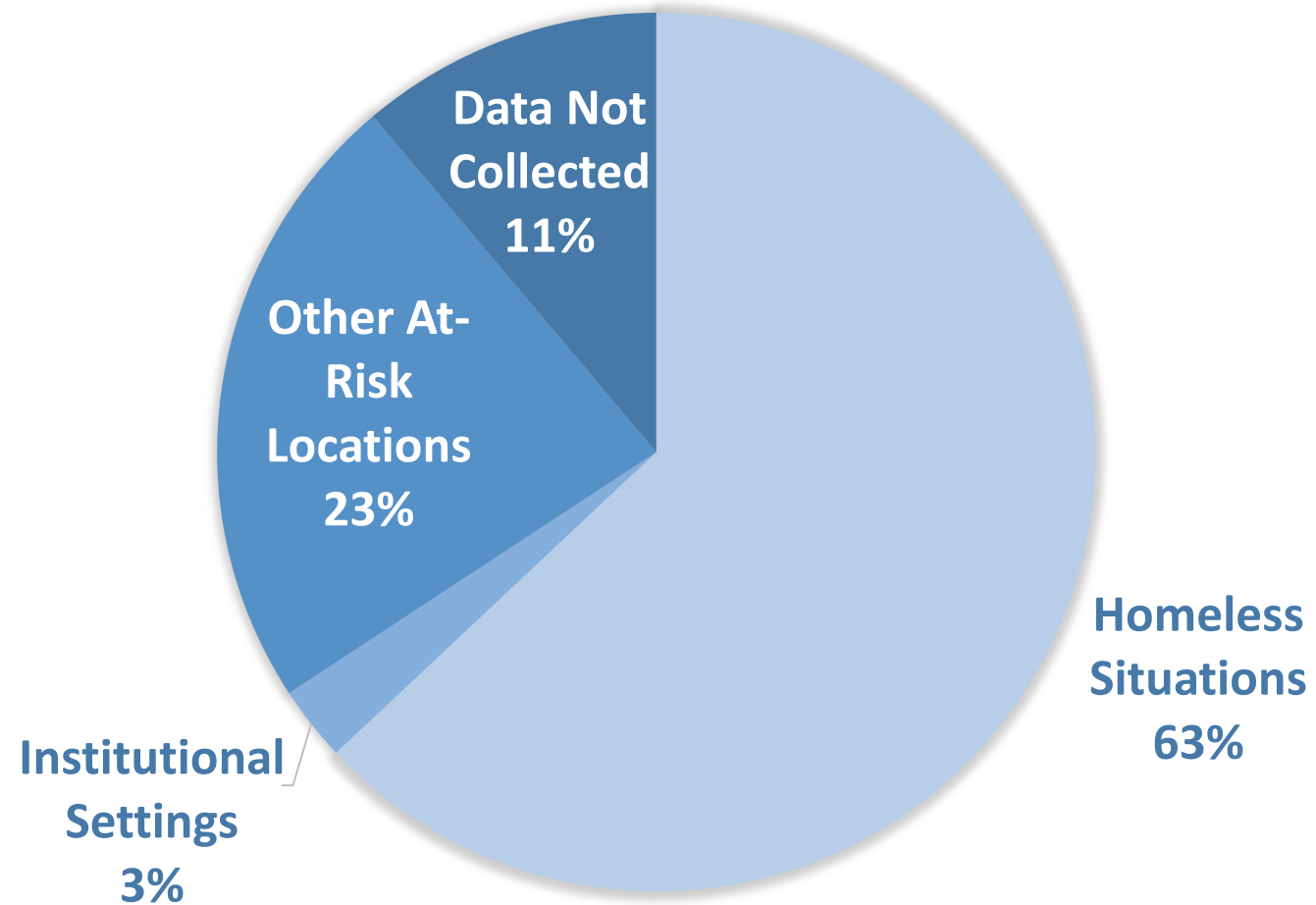


Coordinated Entry





Homelessness in our Community





Homeless Response pre-2020



- **Resources are extremely limited**
- **No year-round shelters** available for adults experiencing homelessness, limited shelter for families experiencing homelessness
- **Minimal new resources each year, program openings happen through attrition leading to long waitlists** due to growing demand and static supply.



Supportive Housing Services Measure Background



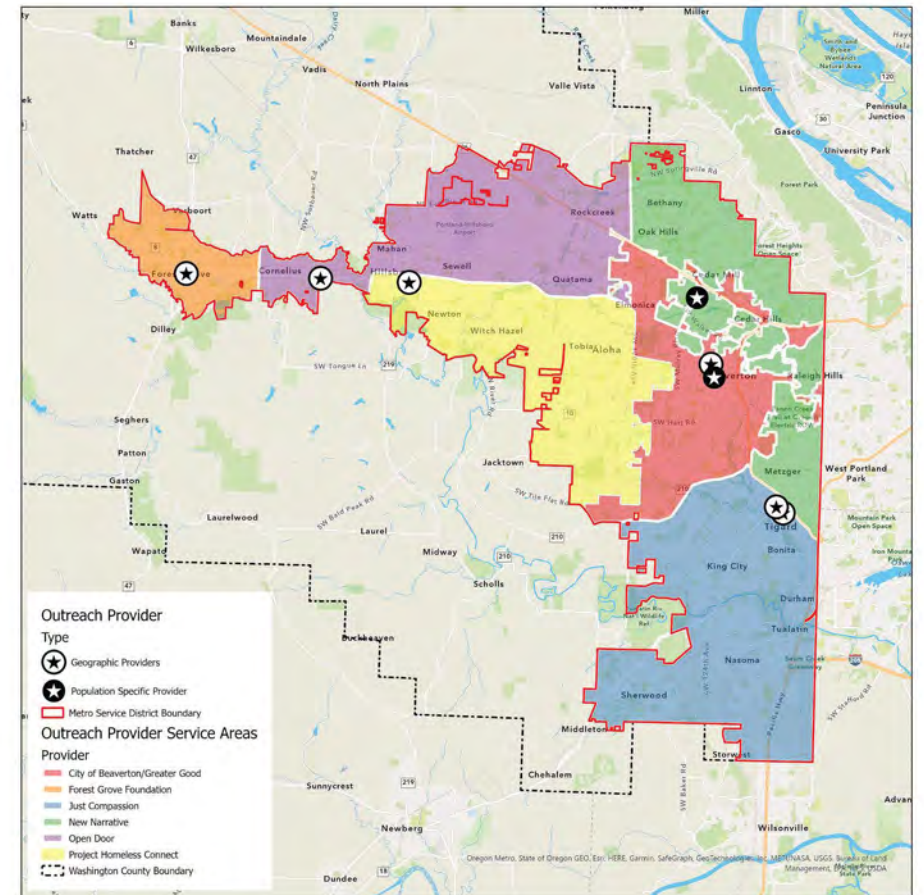
- Approved by voters on May 19, 2020 with 58% support
- Built and championed by a broad regional coalition of business and community leaders. Estimated to generate more than \$200 million per year
- Scaled to achieve “functional zero” chronic homelessness regionally



Outreach Programs

Outreach Providers

- **Ten outreach providers** engaging unsheltered individuals county wide
- Hillsboro served by **Open Door** and **Project Homeless Connect**
- **Home Plate & IRCO** – Specific populations county wide

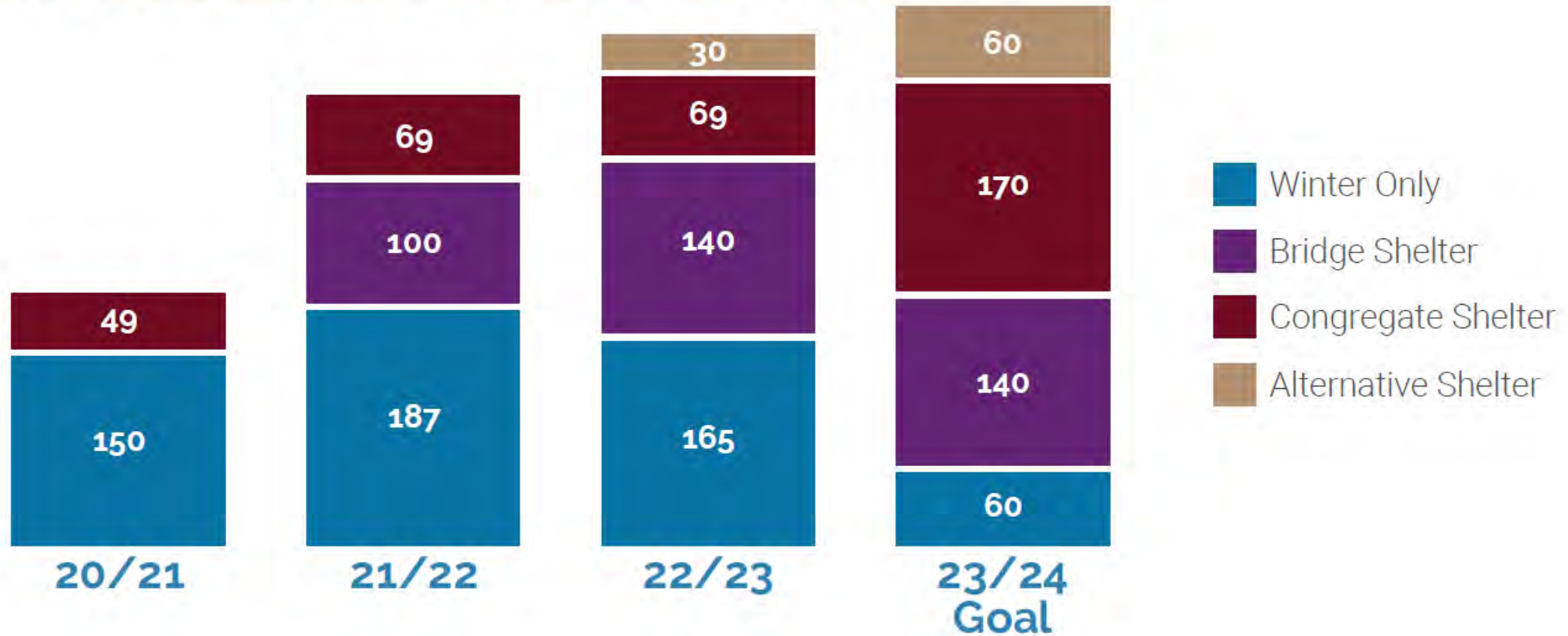




Washington County Programs



SHELTER SYSTEM CAPACITY

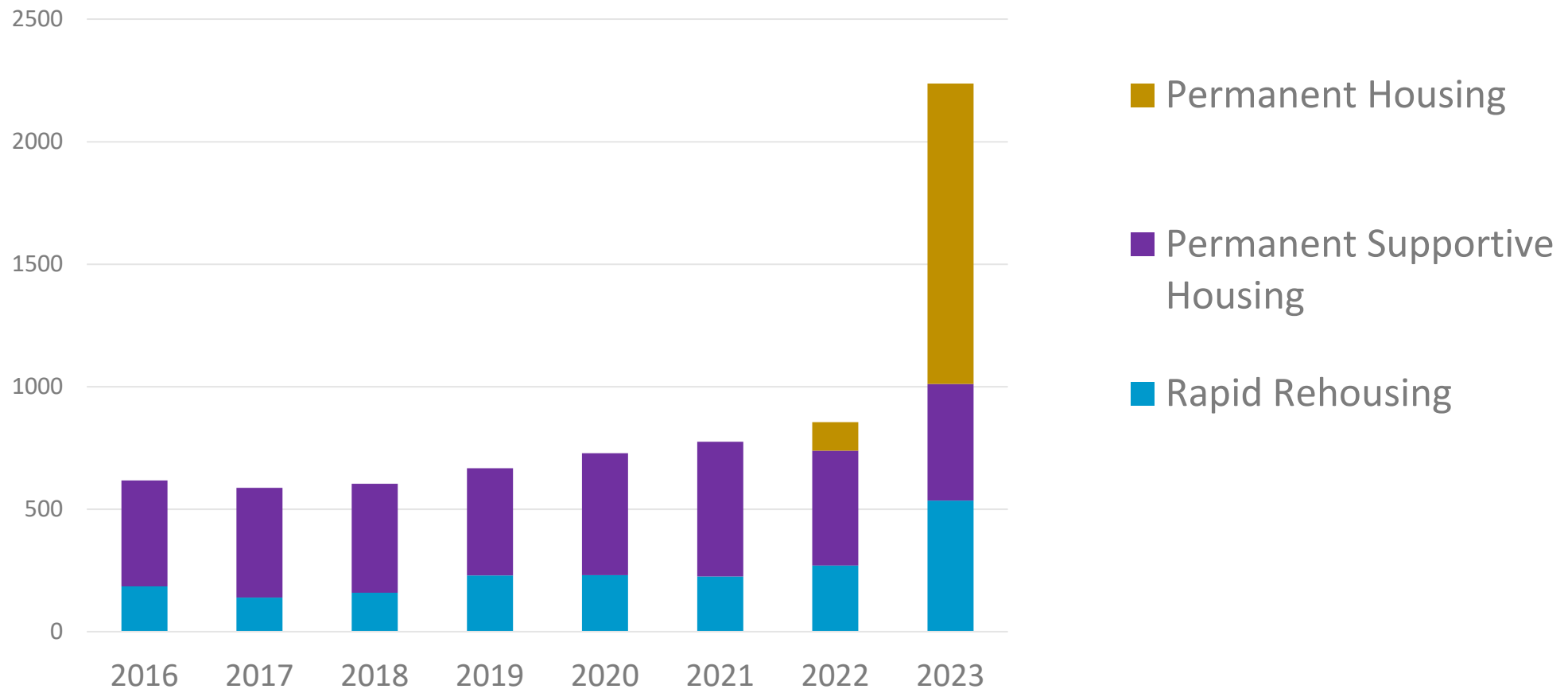




Washington County Programs



Housing System Capacity





Collaboration and Partnerships



- 30 Provider partners including population specific partners
 - 72 New Housing Workers!
- City, State and Regional Partners
- Other Federal Programs
- Existing Systems of Care - Liaisons embedded in five Health and Human Services Department Programs:
 - Hawthorn Walk-in Center
 - Maternal, Child and Family Program
 - Behavioral Health Intensive Care Coordination
 - Developmental Disabilities Division
 - Disability, Aging and Veteran Services Program



Urban League, Bienestar, Greater Good Northwest meet with Washington County staff



Outcomes



Continued development of system capacity to respond to unmet community need

- ✓ More than **900 Households** served in Emergency Shelter
- ✓ In 2022 the Homeless Services Division and our partners helped **1,300 households** transition out of homelessness into long-term housing.



Program participant Manny moved into housing with the help of Project Homeless Connect case managers and an RLRA voucher!



Questions?



Katherine Galian,

Program Manager

Washington County Department of Housing
Services

Homeless Services Division

Homeless_Services@washingtoncountyor.gov