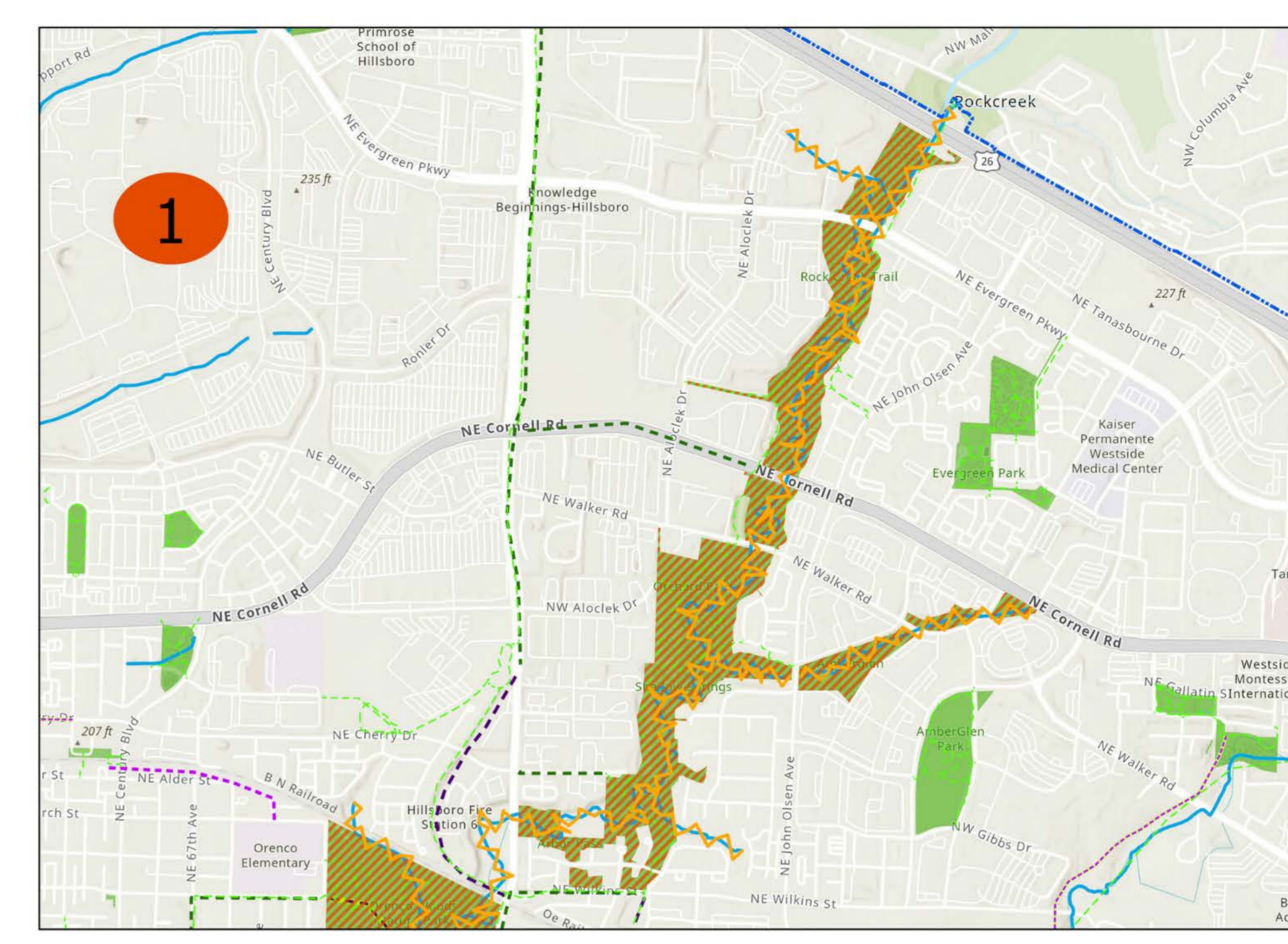
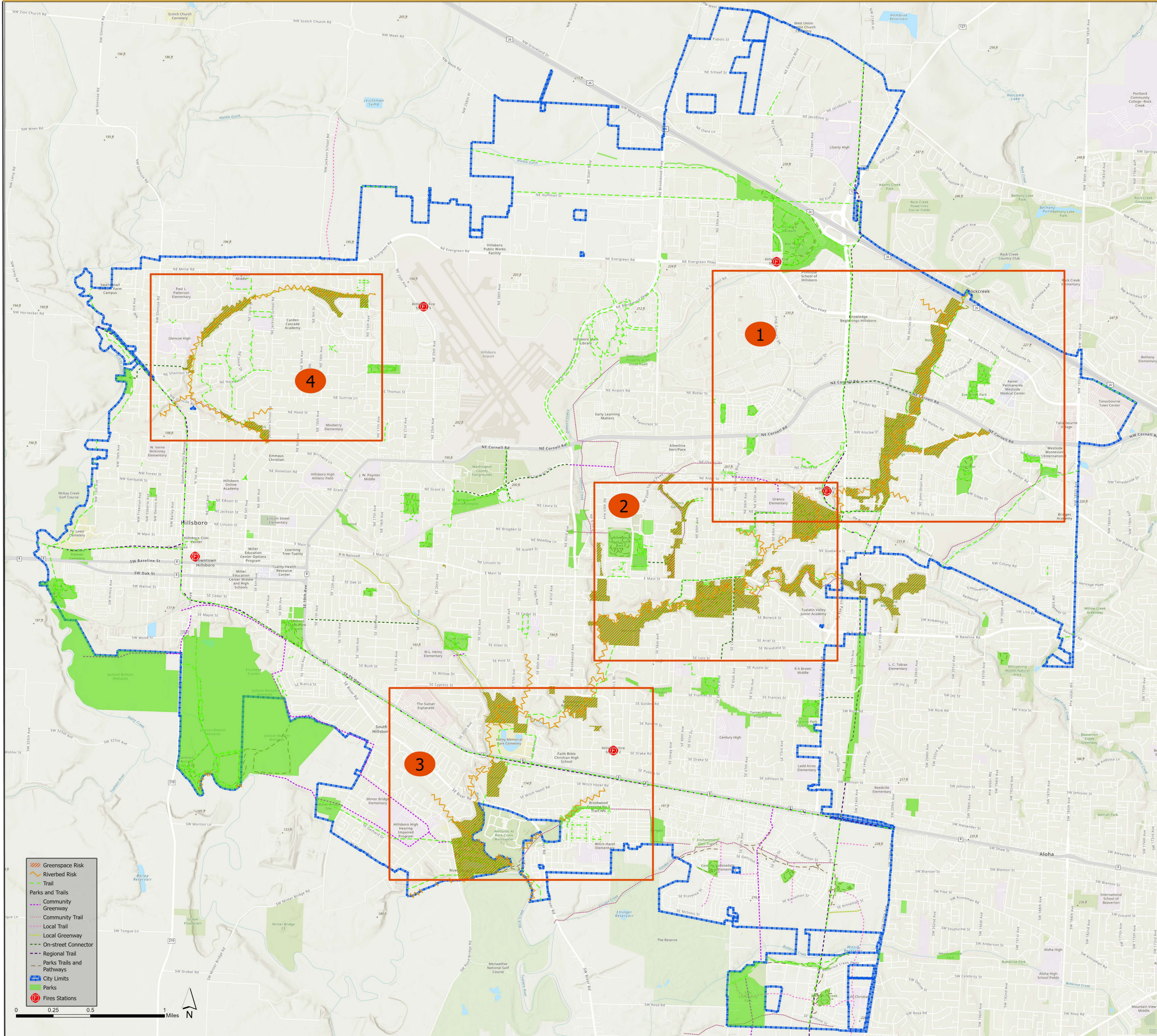


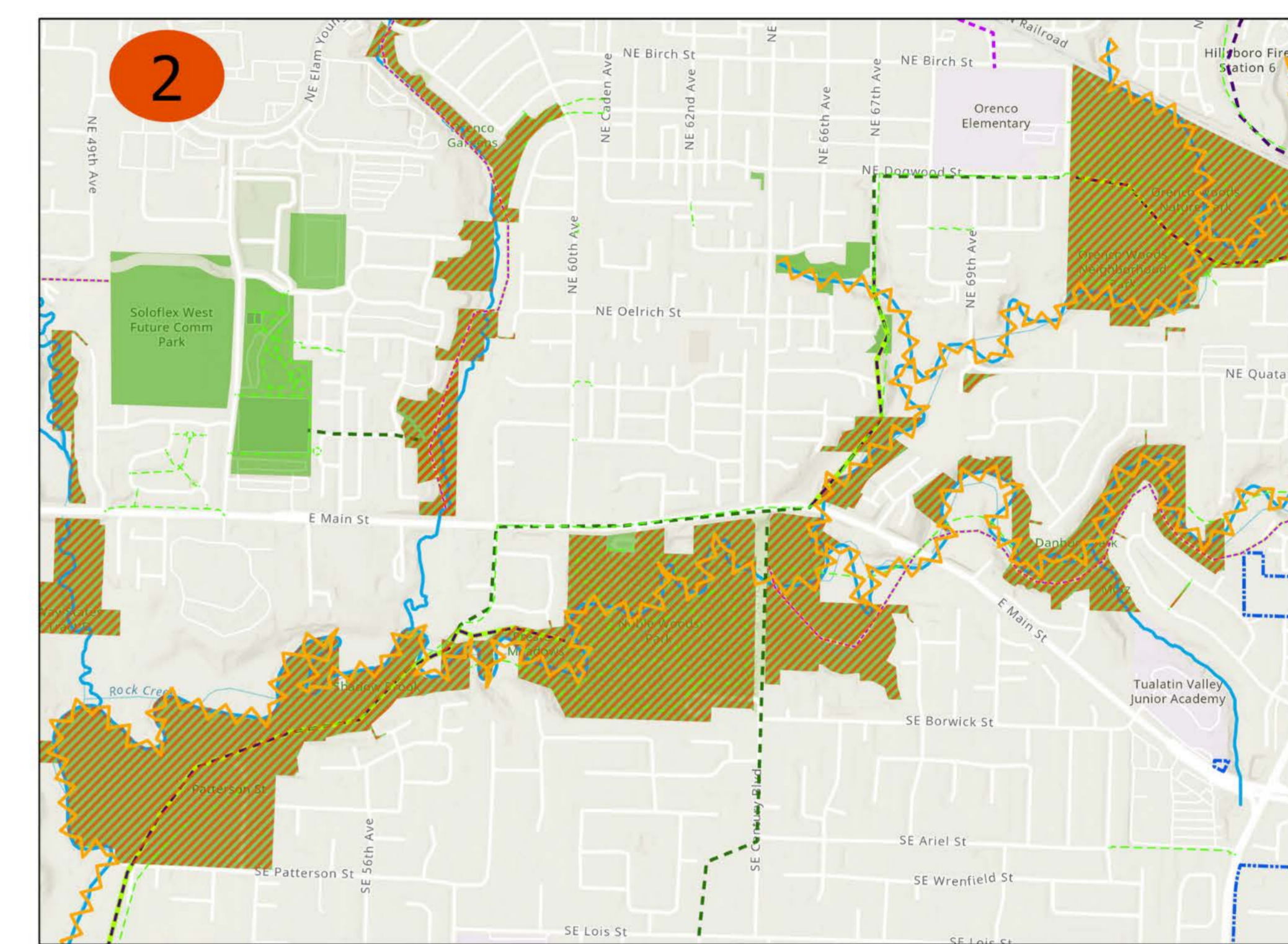
# Hillsboro Greenspaces with East Wind Fire Risk



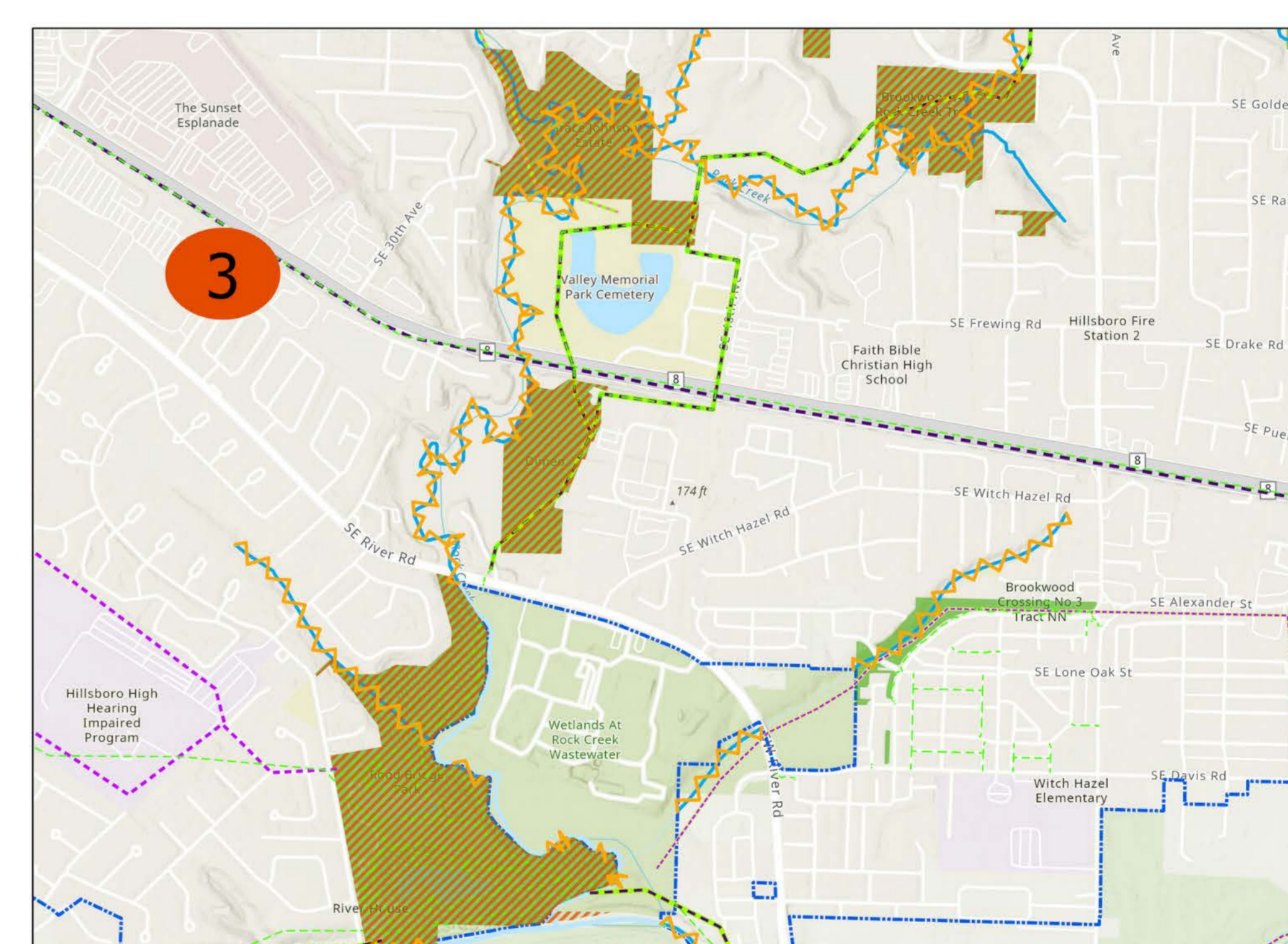
Esri, NASA, NOAA, USGS, FEMA, Esri Community Maps Contributors, City of Hillsboro, Oregon, Oregon Metro, Oregon State Parks, State of Oregon GEO, Esri, TomTom, Garmin, SafeGraph, GeoTechnologies, Inc, METI/NASA, USGS, Bureau of Land Management, EPA, NPS, US Census Bureau, USDA, USFWS, Esri Community Maps Contributors, City of Hillsboro, Oregon, Oregon Metro, Oregon State Parks, State of Oregon GEO, WA State Parks, Esri, TomTom, Garmin, SafeGraph, GeoTechnologies, Inc, METI/NASA, USGS, Bureau of Land Management, EPA, NPS, US Census Bureau, USDA, USFWS



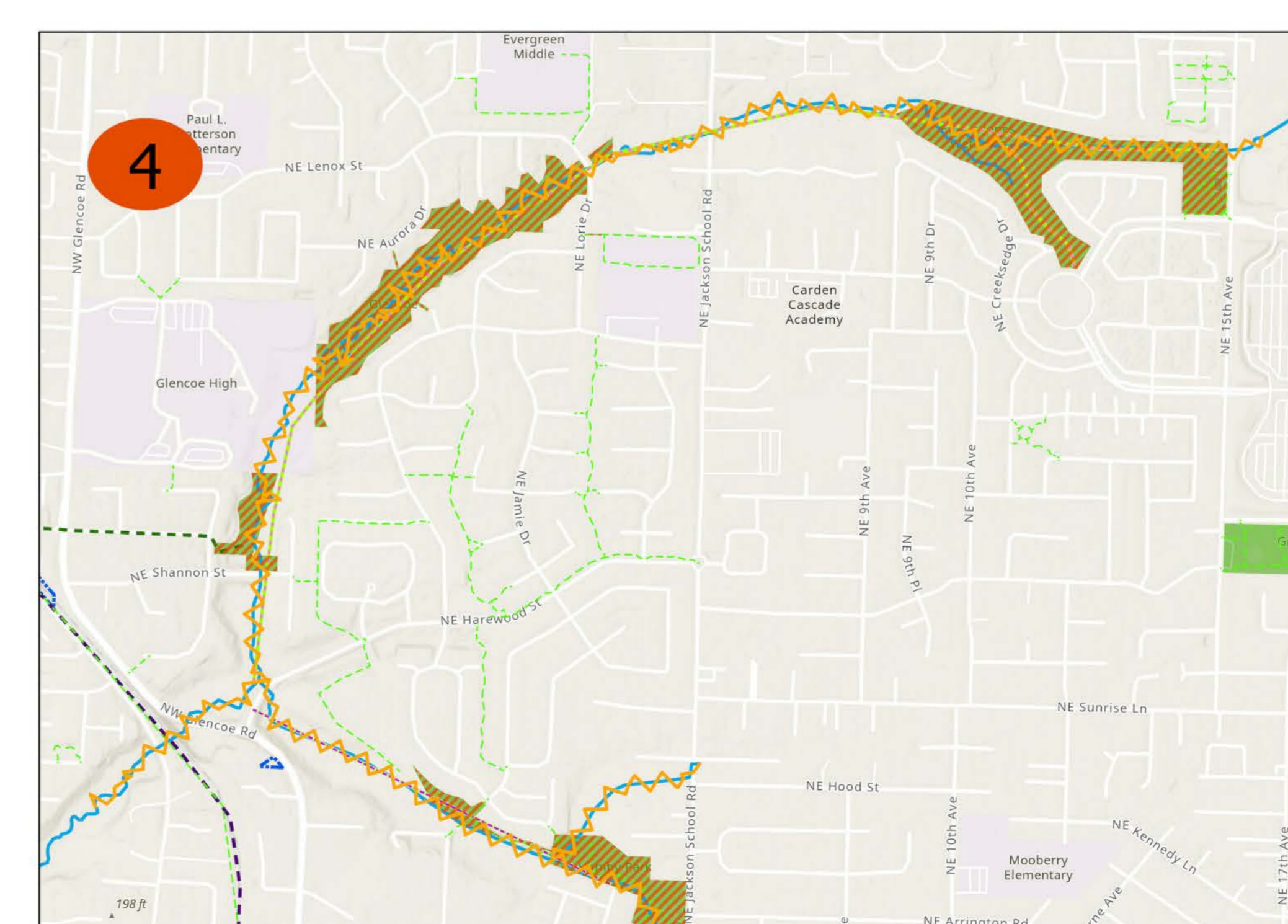
- Rock Creek Trail from Highway 26 to Orenco Woods Park



- Orenco Woods Park, southwest to Noble Woods Park
- Rock Creek continuation from Noble Woods Park, southwest to Brookwood Blvd



- Southwest from Brookwood Blvd to Valley Memorial Cemetery
- Rock Creek continuation south to TV Highway to River Rd., past CWS to Rood Bridge Park
- Brookwood Crossing near Alexander and Lone Oak, past River Rd. to CWS to Rood Bridge Park



- Jackson School Woods Nature Reserve to UJ Hamby Park
- North of Shannon St., past Glencoe High School to Glencoe Creek Park